

Kennedys'

01737817718

Kennedys-ipa.co.uk

@kenneysipa

Windlesham, Furze
Grove, Tadworth,
KT20 6ES

Could this be the
lifestyle upgrade
you've been waiting
for?

£2,450,000



5



3



5



6+



This exceptional brand new five bedroom detached executive home, set within a private grove, due for completion at the end of January 2026, presents an outstanding opportunity to acquire a substantial, high-specification family home offering generous accommodation over three floors.

Designed with both luxury and versatility in mind, the property delivers , meticulous attention to detail, and flexible living spaces suited to modern living

Constructed to an exacting standard, this home blends contemporary design with refined craftsmanship throughout.

Every element has been carefully considered, resulting in a home of genuine quality and finish.

Some of the many key features include:

- Premium concrete floor construction enhancing energy efficiency
- Underfloor heating to ground and first floors, including garage
- ASHP (Air Source Heat Pump) and EV charger
- Schmidt Kitchen with Silestone worktops with large Island and separate utility
- Integrated Siemens kitchen appliances, including a Quooker boiling water tap and built-in coffee machine
- Five spacious bedroom suites, each with walk-in wardrobe and luxury en-suite bathroom
- Duravit sanitary ware throughout
- Feature staircase
- CCTV security system and electric gates
- Bespoke coving throughout, with elegant finish
- Fitted Roman blinds
- Silverlox trackless garage door
- Landscaped gardens with generous outdoor entertaining space
- Fully wired detached garden room
- Large paved driveway suitable for 6+ cars
- Ten year build warranty



This is a rare opportunity to secure a newly built, architecturally impressive home where exceptional build quality, cutting-edge features, and thoughtful design come together to create a truly outstanding living environment.

More details coming soon...

Kingswood offers a range of facilities including a village store, beauty salon, pet shop, men's barbershop, post office, Kingswood Arms public house and eatery and two local golf courses.

The mainline station provides a regular service into Victoria and London Bridge and the M25 motorway is accessed via junctions 8 or 9.

Schooling is plentiful in both the state and private sector with nearby Tadworth Primary School, The Beacon, Abdour, Chinthurst Prep school and Reigate Grammar. Nearby villages such as Tadworth, Walton on the Hill and Banstead offer a range of different facilities, including shopping, recreational, educational and a wealth of restaurants. Nearby main towns include Reigate, Epsom and Sutton.

If you have any questions or would like more information, all you have to do is give us a call, email us or pop in and see us at our offices.

01737817718

info@kennedys-ipa.co.uk



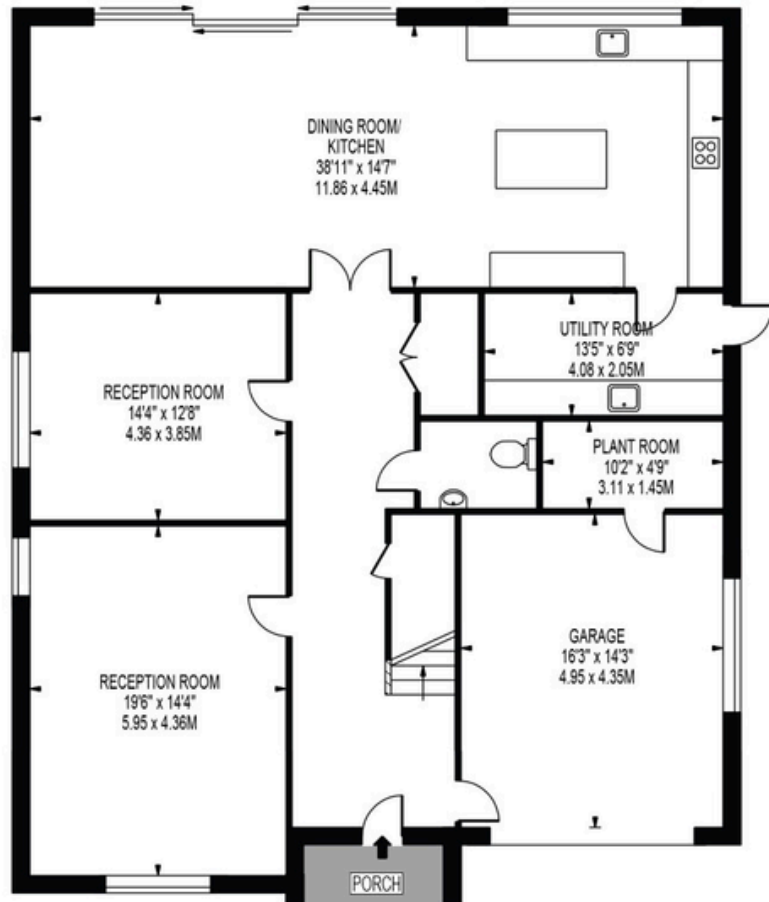
WINDLESHAM

APPROXIMATE GROSS INTERNAL FLOOR AREA: **4865 SQ FT - 451.97 SQ M**

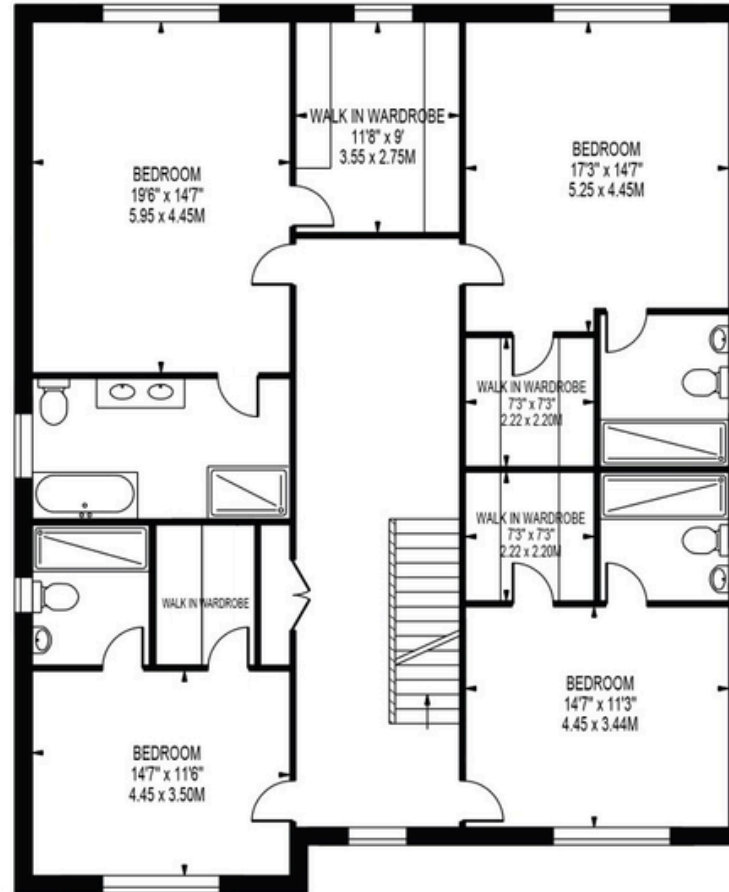
(INCLUDING GARAGE & EXCLUDING CABIN)

APPROXIMATE GROSS INTERNAL FLOOR AREA OF GARAGE: **232 SQ FT - 21.53 SQ M**

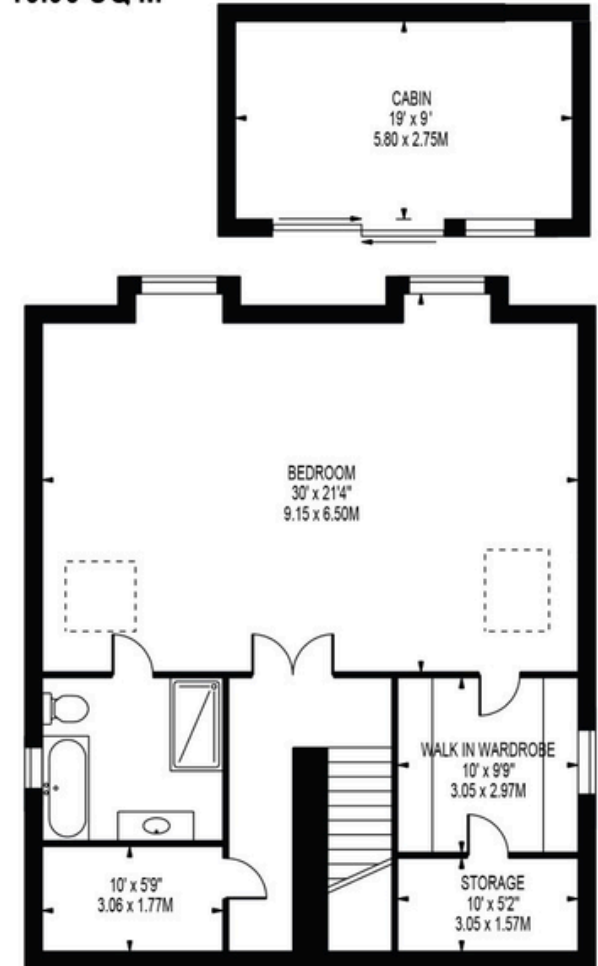
APPROXIMATE GROSS INTERNAL FLOOR AREA OF CABIN: **172 SQ FT - 15.95 SQ M**



GROUND FLOOR



FIRST FLOOR



SECOND FLOOR

FOR ILLUSTRATION PURPOSES ONLY

THIS FLOOR PLAN SHOULD BE USED AS A GENERAL OUTLINE FOR GUIDANCE ONLY AND DOES NOT CONSTITUTE IN WHOLE OR IN PART AN OFFER OR CONTRACT.
 ANY INTENDING PURCHASER OR LESSEE SHOULD SATISFY THEMSELVES BY INSPECTION, SEARCHES, ENQUIRIES AND FULL SURVEY AS TO THE CORRECTNESS OF EACH STATEMENT.
 ANY AREAS, MEASUREMENTS OR DISTANCES QUOTED ARE APPROXIMATE AND SHOULD NOT BE USED TO VALUE A PROPERTY OR BE THE BASIS OF ANY SALE OR LET.